

Speaker Building

Books & Software

WT3 Woofer Tester

Measuring speaker parameters is now more accurate and faster than ever!

- Measure speaker parameters of any driver, large or small
- Compact USB interface with molded test leads
- Data can be printed or saved to create a driver parameter library
- Parameters can be exported to WinSpeakerz and other popular box design programs
- Measures VAS using added mass, test box or SPL method
- Straightforward, easy-to-use measurement software
- Manufactured on state-of-the-art equipment using surface mount components

Dayton Audio's WT3 makes measuring loudspeaker driver parameters easier, faster and more accurate than ever before. While previous generation woofer testers took around 6 minutes to measure 30 impedance points, the new WT3 measures over 30,000 data points in only a few seconds using a new swept sine technique that is only available with the WT3. The result is a very high-resolution impedance measurement that allows the extraction of an extremely accurate driver parameter set, suitable for the most critical loudspeaker design work. VAS can be measured by traditional test box, added mass or, more conveniently, just by specifying the 1W/1m SPL of the driver. No other loudspeaker impedance tester is as fast, versatile or as easy to use as the WT3.

System Requirements

- IBM PC or compatible system with 64MB Memory RAM or more
- 500 MHz Pentium III processor or higher
- Compliant with both USB 2.0/1.1 interface
- MS Windows 98, Me, NT, 2000, XP, or Vista.

#390-804 \$149.99 LIST **\$99.88** EACH



Loudspeaker Design Cookbook 7th Edition

Now in the 7th edition! More comprehensive and featuring a wealth of new material, the 7th edition of the Loudspeaker Design Cookbook is a must-have for new speaker builders as well as owners of previous editions of the Cookbook. Plus, the book includes a FREE offer to receive a CD complete with hundreds of graphs and pictures, including 123 graphs that complete the diffraction study in Chapter 6. Also on the CD—a FREE copy of LDC7 Design Suite software—a set of eight loudspeaker design tools including, Box Designer, Driver Design Tools, Crossover Designer, and more (a \$99.00 retail value, CD redeemable by mail.) Written by Vance Dickason. 295 pages. Copyright 2005.



#500-035 \$39.95 LIST **\$33.95** EACH

Introduction to Loudspeaker Design

Introduction to Loudspeaker Design is written for hobbyists, students, technicians, and engineers seeking an overview of the technology of loudspeakers. Starting with a brief history of audio developments the book begins by introducing the concepts of frequency, pitch, and loudness, and proceeds to develop the idea of a loudspeaker as a system.

The author is a physicist/audio design engineer with over 20 years experience in the research and development of audio products. His WinSpeakerz (#500-946) application is widely used throughout the audio industry as a tool for evaluating loudspeakers before they are built. Illustrated 166 page paperback written by John Murphy. Copyright: 1998.



#500-948 \$29.99 LIST **\$24.95** EACH

Speaker Building 201

With this book, anyone can become a speaker builder. Learn the concepts you need OR choose any of the eleven tested and proven speaker designs included in the book. Features a variety of speaker projects, many of which have been tested by loudspeaker expert, Joseph D'Appolito. Written for beginners who want to build and intermediates who want to improve their speaker design and building skills. Contains all the information the speaker builder needs to design and build a first-rate system, one that surpasses higher-cost commercial products. Written by Ray Alden. 151 pages. Copyright: 2004.



#500-044 \$34.95 LIST **\$29.95** EACH

Testing Loudspeakers

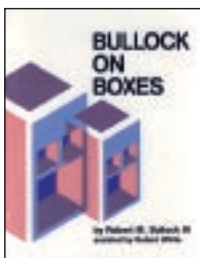
This soon-to-be-classic clearly explains the proper way to acoustically test and measure a loudspeaker. Not intended for the novice, it covers in-depth driver testing, low frequency system electrical impedance tests, frequency response acoustical testing of single and multiple drivers, and techniques for deriving Thiele-Small parameters using both analog and PC based methods. If you own The Loudspeaker Design Cookbook (#500-035), then this book should be the next addition to your technical library. Written by Dr. Joseph D'Appolito 174 pages. Copyright: 1998.



#500-030 \$34.95 LIST **\$31.45** EACH

Bullock On Boxes

Wouldn't it be nice to have an expert assisting you as you design your ideal speaker system? Robert M. Bullock III has been a contributing editor to Speaker Builder magazine since 1980. Now, for the first time, these articles have been compiled in a single volume. This book is an invaluable guide to designing and building vented box systems based on Thiele/Small models. There are also three chapters on Bullock's speaker design programs, Boxmodel and Boxresponse. 74 pages. Copyright: 1991.



#500-037 \$10.95 LIST **\$9.85** EACH

Designing, Building & Testing Your Own Speaker System

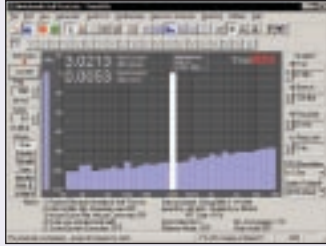
Build your own system with this completely revised edition of David Weems' best selling book. Even if you don't plan to build your own system, you'll appreciate Weems' expert advice on getting the most out of your speaker investment. But if you are looking for hands-on experience in this fascinating audio field, there is no better source of clear, step-by-step construction techniques and project plans than Designing, Building and Testing Your Own Speaker System. 223 pages in paperback. Copyright: 1997. 4th edition.



#500-021 \$19.95 LIST **\$17.95** EACH

True Audio's TrueRTA™

- Low distortion signal generator
- Digital level meter
- Dual trace oscilloscope
- High-resolution real time audio spectrum analyzer



True Audio's Level Two (1/3 octave) TrueRTA is a real-time software-based audio instrument for testing and evaluating audio systems. All you need is a PC with basic sound capability. TrueRTA also includes digital voltmeter that reads true RMS voltage and dBu levels, and an audio spectrum analyzer.

To set up your own audio test lab you will need a digital voltmeter to calibrate TrueRTA™ and a collection of cables and adapters for connecting electronic gear to your sound card for testing. Most sound card jacks are 1/8". If you want to do acoustic testing of loudspeakers in addition to the above you will need a calibrated microphone, a microphone preamplifier or mixer, an audio power amplifier to drive the speaker under test, and cables to connect the line out of the sound card to the input of the audio power amp. Software can be upgraded to Level Three (1/6th octave) or Level Four (1/24th octave). Minimum system requirements: 500 MHz Pentium III processor or equivalent and 64MB of RAM.

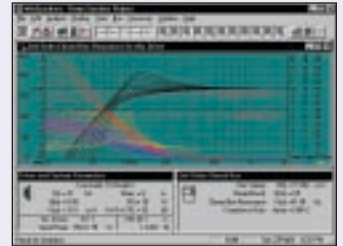
*Visit parts-express.com for more details

#500-944 \$39.95 EACH

WinSpeakerz® Introduction to Loudspeaker Design TRUE AUDIO®

Now you can build great sounding loudspeakers that you might pay hundreds or even thousands of dollars for at an audio salon!

- Inexpensive
- Easy to use
- Great learning tool



WinSpeakerz is a loudspeaker simulation program for Windows 95/98/ME/NT/2000/XP. This popular speaker simulator lets you propose various speaker systems and then evaluate them in software before you cut wood or order expensive transducer components. Besides enclosure simulation, WinSpeakerz supports speaker builders with various box and crossover calculators to see your projects to completion. Impedance compensators and tweeter attenuators can also be designed quickly. Just enter a few parameters and the component values are calculated as you type.

*Visit parts-express.com for more details

#500-946 \$79.00 EACH

BassBox™ 6 Pro for Windows

BassBox Pro proves that a professional enclosure design program can be both easy-to-use and affordable.



Versatile:

Design speakers for any environment: car, truck, van, home hi-fi, home theater, pro sound, studio, stage, PA and musical instrument. Choose from closed, vented, multi-order bandpass, and even passive radiator alignments to get the most from your woofers. The program will even simulate multiple woofer formats in push-pull, isobaric, series, parallel, and many more combinations.



*Visit parts-express.com for more detailed information

#500-923 (CD-ROM) \$129.00 LIST \$114.75 EACH

X-over 3 Pro for Windows

Powerful Capabilities

Design 2 or 3-way passive crossover networks, separate low-pass, band-pass or high-pass filters, impedance equalization networks, L-pads and series or parallel notch filters. It's internal Thiele-Small modeling engine and impedance equalization networks provide excellent results without costly measurements or optimizers.



*Visit parts-express.com for more detailed information

#500-919 (CD-ROM) \$99.00 LIST \$84.90 EACH

Pro Combo with BassBox™ 6 Pro and X-over 3 Pro

#500-927 (CD-ROM) \$199.00 LIST \$169.80 SET



BassBox™ Lite for Windows

BassBox Lite is a streamlined version of BassBox Pro, with 85% of the Pro features.

*Visit parts-express.com for more detailed information

#500-921 (CD-ROM) \$69.00 LIST \$58.90 EACH

SoundEasy Loudspeaker Design Software

- Comprehensive speaker design package provides the ultimate flexibility to design any system imaginable
- Enclosure design portion performs low-frequency modeling
- Impedance and frequency measurements possible with supported sound card and microphone
- Crossover CAD with optimizer handles up to 5-way systems
- Continually improved and upgraded to support the latest hardware



BoxCad - a sophisticated software tool that focuses on enclosure design and analysis. Comes with 10 standard enclosure alignments built-in (including passive radiator modeling), but will also model custom user-created alignments.

EasyLab - measures frequency response, impedance profiles, T/S parameters, distortion, and many other aspects of loudspeaker performance data can be printed, exported, or saved for future use.

SoundEasy - main portion is used to model the overall time and frequency portions of the loudspeaker system. The latest version even includes a soundcard crossover emulation portion that allows you to "hear" your design before you built it!

This is a very advanced program and is one of the most powerful design packages available at any price. Note: This software is recommended for the advanced speaker builder due to the large number of variables and very complex nature of the content.

*Visit parts-express.com for more detailed information

#500-912 \$299.99 LIST \$249.99 EACH

Eminence Designer Speaker Cabinet Design Software



Eminence Designer is a state-of-the-art speaker enclosure design program for PCs running Windows 95, 98, NT4 or later. With Eminence Designer, box design is as easy at 1-2-3.



Eminence Designer models closed, vented, bandpass and passive radiator boxes, and it will print box drawings and graphs for a professional presentation. Eminence Designer is quick to learn and easy to use.

System Requirements: Microsoft Windows 95, 98, NT4 or later and a compatible computer (IBM PC with a Pentium processor or equivalent) with at least 16 MB of RAM (32 MB recommended), 17-23 MB of free hard disk space and a CD-R compatible CD-ROM or DVD drive. The Arial and Symbol TrueType fonts must be installed (both fonts are a standard part of Windows).

#500-945 \$84.99 LIST \$79.97 EACH